

iSmartMate

User Manual

Ver 1.1

Contents

SECTION1 INSTALLATION AND UNINSTALL.....	- 1 -
1.1 INSTALLATION AND UNINSTALL OF WINDOWS.....	- 1 -
1.2 INSTALLATION AND UNINSTALL OF LINUX	- 2 -
SECTION2 ISMARTMATE FOR WINDOWS INTRODUCTION	- 3 -
2.1 ISMARTMATE INTRODUCTION	- 3 -
2.2 ISMARTMATE SYSTEM SUPPORT	- 3 -
SECTION3 ISMARTMATE SPECIFICATIONS.....	- 4 -
3.1 MAIN WINDOW SPECIFICATIONS.....	- 4 -
3.2 PARAMETERS CONFIGURATION SPECIFICATIONS	- 5 -
3.3 SHUTDOWN RECORD SPECIFICATIONS.....	- 6 -
3.4 EVENT LOG SPECIFICATIONS	- 6 -
3.5 ALARM DIALOG	- 7 -
3.6 ABOUT DIALOG.....	- 7 -
3.7 TASKBAR WINDOW	- 7 -

SECTION1 Installation and uninstall

1.1 Installation and uninstall of Windows

Put the iSmartMate Utility CD into the CD driver. And execute “iSmartMate.exe” program. Enter into the following installation interface.

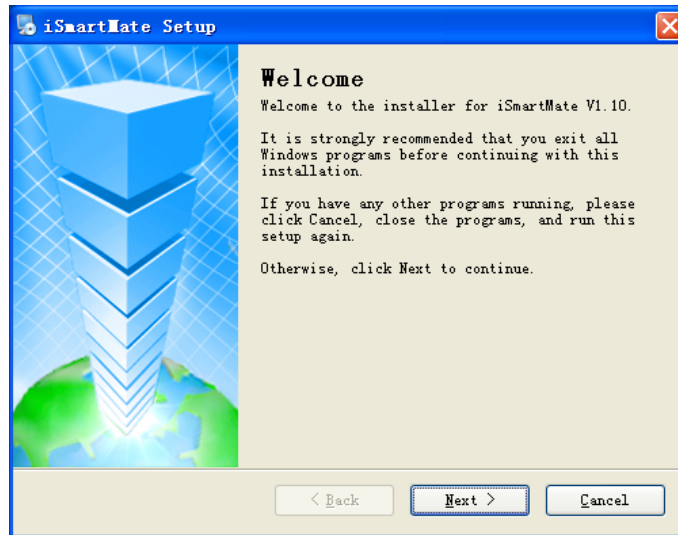


Figure 1 Setup Wizard beginning

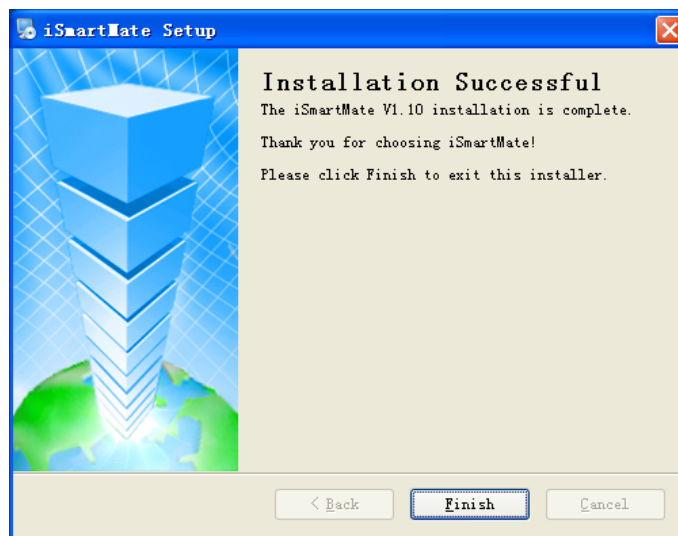


Figure 2 Setup Wizard ending

Click “Finish” button to initiate iSmartMate and start using the iSmartMate. When you uninstall iSmartMate, you can enter the following uninstall interface.

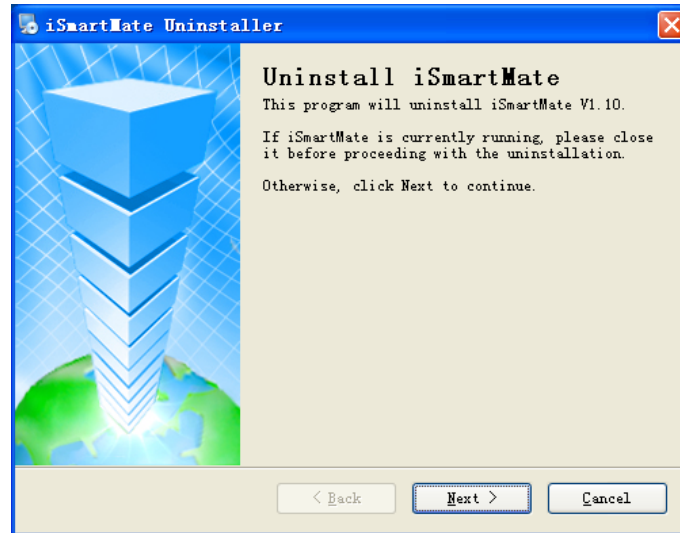


Figure 3 Uninstall Wizard beginning

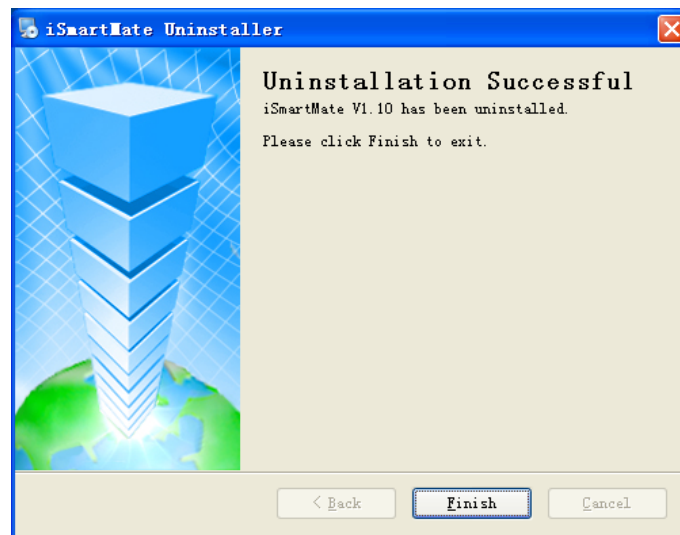


Figure 4 Uninstall Wizard ending

Click "Finish" button to Uninstall iSmartMate.

1.2 Installation and uninstall of Linux

Put iSmartMate.bin into the corresponding installation directory. Then in the Terminal using the command of `sh iSmartMate` can install iSmartMate program.

SECTION2 iSmartMate for Windows Introduction

iSmartMate is a utility for connecting to UPS. This utility is for the Windows platform. When the iSmartMate get the failure signal from the SNMP Based on Ethernet, the iSmartMate will save & close the files and shutdown the system on Schedule time configured by users. When the hardware installation of the SNMP has been completed, you could install the iSmartMate on any of the Windows system on the network. When the iSmartMate detects the AC Fail, Battery Low, UPS Fail signals from the SNMP, it will save & close the file and shutdown the system safely.

2.1 iSmartMate Introduction

- ① Remote monitor UPS through RFC1628 SNMP protocol
- ② Detects the AC Fail, Battery Low, UPS Fail signals
- ③ Can shut down system automatically Safely
- ④ Can provide user with many optional configurations
- ⑤ Can pop the warning box to notify to user
- ⑥ Can save the important files before system shutdown

2.2 iSmartMate System Support

- ① Windows 8 32-bit/64-bit
- ② Windows 7 32-bit/64-bit
- ③ Windows XP 32-bit/64-bit
- ④ Windows Server 32-bit/64-bit
- ⑤ Linux/X11 32-bit/64-bit

SECTION3 iSmartMate Specifications

3.1 Main window Specifications

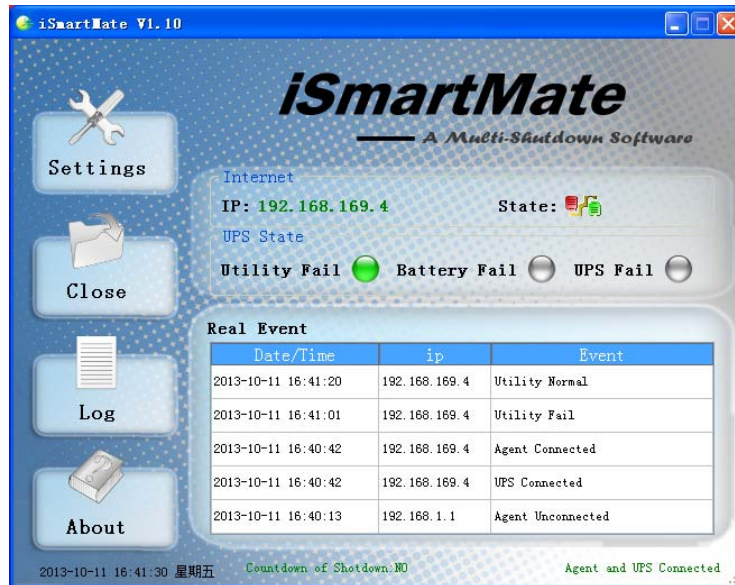


Figure 5 Main window

N	Fun.	Detail Descriptions
1	IP	Host connection IP address
2	AC Error	UPS Ac Power Lost
	Battery Low	Battery Capacity is Low in Battery Mode
	UPS Error	UPS Operating Error, power-supply Failed
3	Real-time Display	Real-time display Connect/Record/Event
4	Current Time	Display Current Software time(RTC)
	Shutdown Time	Display Shutdown time
	Agent and UPS	Display Agent and UPS state
5	Configurations	Parameters Configurations(IP, SNMP, The pop-up warning dialog interval, Shutdown time etc.)
	Close	Record last shutdown time, procedures and save the file.
	Event Log	Record the network status and UPS status
	About	Software version and copyright information.

Table 1 description of the main window

3.2 Parameters Configuration Specifications

Figure 6 is an SNMP settings, set the IP address and the SNMP version on the choice , After factory settings corresponding SNMP card IP to other settings if no special needs, default.

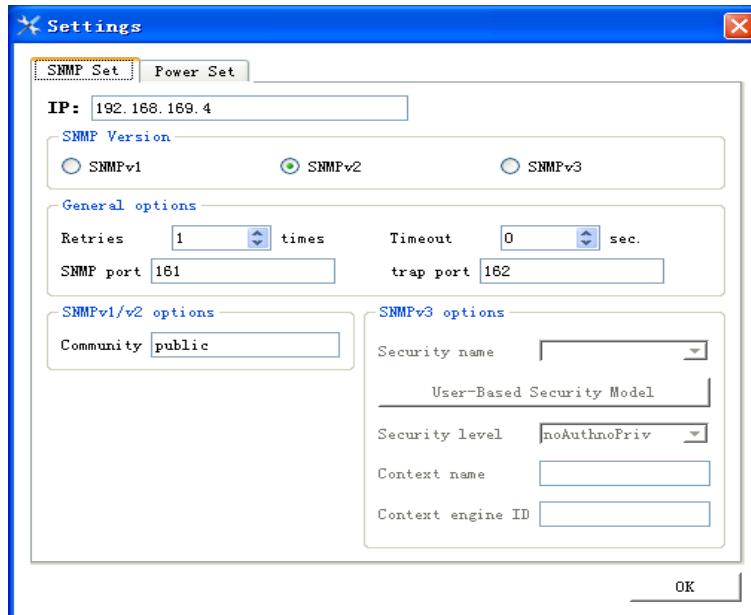


Figure 6 SNMP Configuration

Figure 7 is the power settings. Select path to need to save, executing external commands, shutdown time set and pop-up warning box interval set.

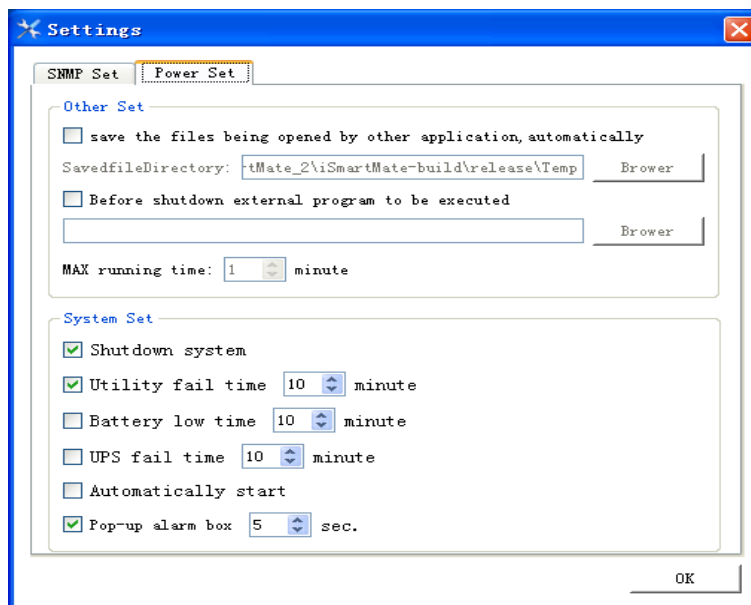
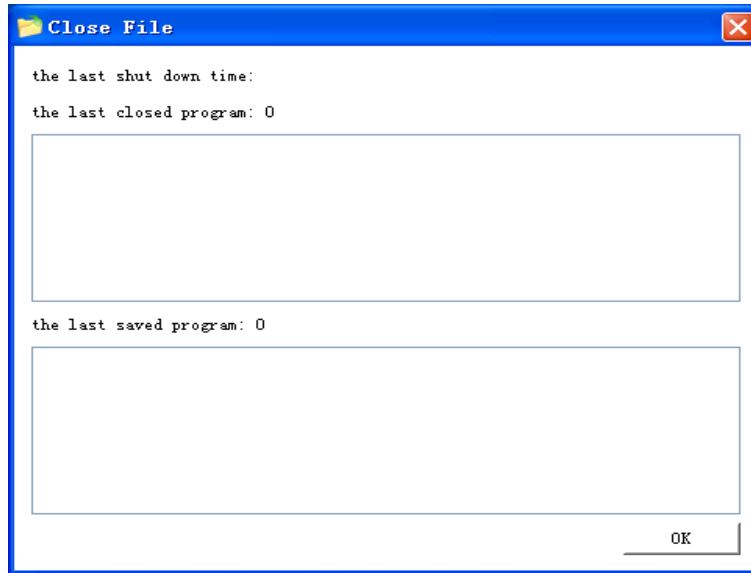


Figure 7 power Configuration

3.3 Shutdown Record Specifications

Figure 8 is a close document window. To save last shutdown time, closed program and saved program.

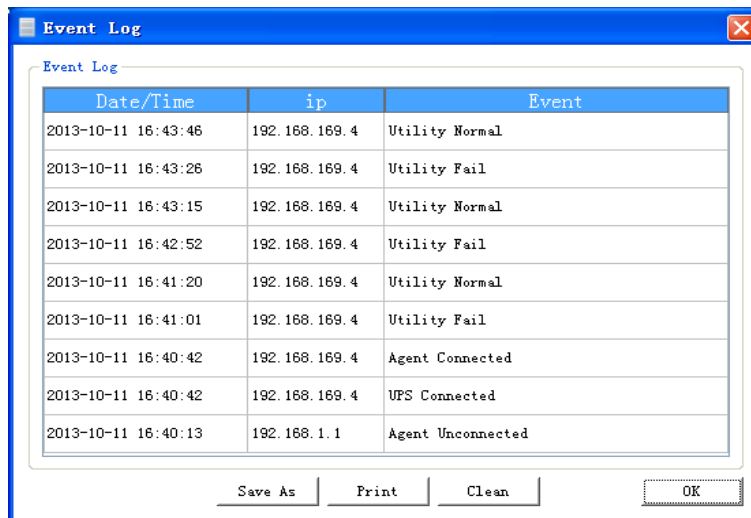


A screenshot of a 'Close File' dialog box. The title bar is blue with a yellow folder icon and the text 'Close File'. The main area is white and contains three text labels: 'the last shut down time:', 'the last closed program: 0', and 'the last saved program: 0'. Below each label is a large, empty rectangular text box. In the bottom right corner, there is an 'OK' button.

Figure 8 close document window

3.4 Event log Specifications

Figure 9 record network status and UPS status.



A screenshot of an 'Event Log' window. The title bar is blue with a document icon and the text 'Event Log'. The main area is white and contains a table with three columns: 'Date/Time', 'ip', and 'Event'. The table has 10 rows of data. Below the table, there are four buttons: 'Save As', 'Print', 'Clean', and 'OK'.

Date/Time	ip	Event
2013-10-11 16:43:46	192.168.169.4	Utility Normal
2013-10-11 16:43:26	192.168.169.4	Utility Fail
2013-10-11 16:43:15	192.168.169.4	Utility Normal
2013-10-11 16:42:52	192.168.169.4	Utility Fail
2013-10-11 16:41:20	192.168.169.4	Utility Normal
2013-10-11 16:41:01	192.168.169.4	Utility Fail
2013-10-11 16:40:42	192.168.169.4	Agent Connected
2013-10-11 16:40:42	192.168.169.4	UPS Connected
2013-10-11 16:40:13	192.168.1.1	Agent Unconnected

Figure 9 Log window

3.5 Alarm dialog

When an alarm occurs, the software will pop up in the lower right corner of the system alarm box.

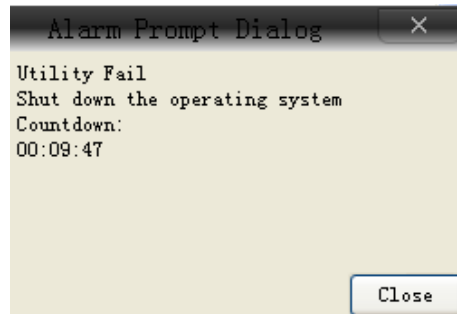


Figure 10 Alarm box

3.6 About Dialog

Figure 11 shows the iSmartMate software version and copyright.

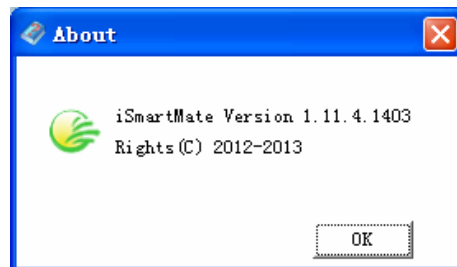


Figure 11 About dialog

3.7 Taskbar window



Figure 12 iSmartMate in the tray

 UPS network is normal,  UPS network is abnormal.